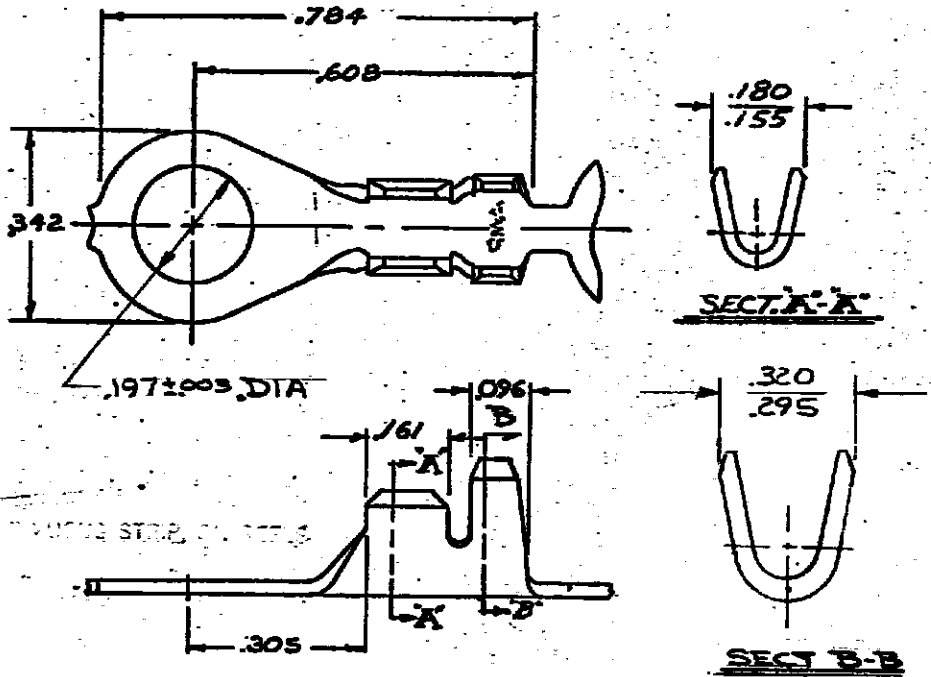


DRAWING MADE IN THIRD ANGLE PROJECTION

LOC **AF** DIST **20**


© COPYRIGHT 1975 BY AMP INCORPORATED, HARRISBURG, PA. ALL INTERNATIONAL RIGHTS RESERVED. AMP INCORPORATED PRODUCTS COVERED BY FOREIGN PATENTS PENDING.

REVISIONS			
LTR	DESCRIPTION	DATE	APPROVED
A	RELEASED FOR PROD PAR.	4/20/76	GY/DA
B	ADDED DASH #2 TTI 76-129	8/18/76	AMM / S.H.
C	OBSOLETE 640253-2 A-3874	6/29/78	SS/
D	RE-ACTIVATE PART NO -2	2-14-80	RES/ GY
E	REVISED AF 0538	10/9/84	SL/ GY
F	OBS -1 + REVISED AF1705 + AF1705	5/8/86	SS/
F1	REVISED PER ECR-13-000107	9/1/13	Y.H.M



NICKEL PLATED STEEL	640253-4
REEL WITH 'U'S UP	640253-2
REEL WITH 'U'S UP	640253-1

WIRE SIZE 16-12 INSUL SIZE (2).125 DIA PART NO

UNLESS OTHERWISE SPECIFIED DIMENSIONS ARE IN INCHES. TOLERANCES ON DECIMALS ±.015 ANGLES ±	CONTRACT NO	 AMP INCORPORATED Harrisburg, Pa.
	DR	
MATERIAL .018 BRASS	CHK	NAME RING
	ASBL	
FINISH TIN	APPD	SIZE A
	DSGN APPD	CODE IDENT NO 00779
	OTHER APPD	DRAWING NO 640253
		SCALE
		SHEET

AMP 1469-82 (7-73)

CUSTOMER DRAWING