

**TOSHIBA**  
Leading Innovation >>>

Toshiba Semiconductor and Storage

## TC7SH32FS,L3F

Hlutanúmer:

Framleiðandi / Vöruúmerki:

Vörulýsing

Gagnablað:

RoHS Staða

Skip frá


Sending vegur

TC7SH32FS,L3F

Toshiba Semiconductor and Storage

IC GATE OR 1CH 2-INP FSV

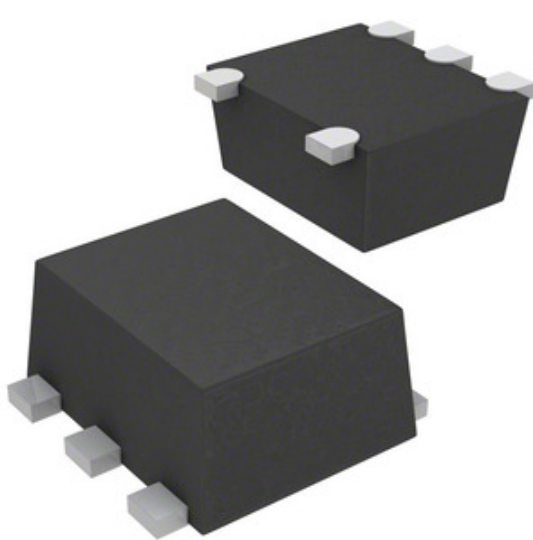
 TC7SH32FS,L3F.pdf

 Leiða frjáls / RoHS samhæft

Hong Kong

DHL/Fedex/TNT/UPS/EMS


### Storage



Mynd getur verið fulltrúi. Sjá upplýsingar um upplýsingar um vörur.

### BEIÐNI UM TILVITNUN

### Upplýsingar um TC7SH32FS,L3F

HLUTANÚMER	TC7SH32FS,L3F
FRAMLEIÐANDI	Toshiba Semiconductor and Storage
LÝSING	IC GATE OR 1CH 2-INP FSV
LEIDA FRJÁLS STAÐA / ROHS STAÐA	Leiða frjáls / RoHS samhæft
GÖGN	 TC7SH32FS,L3F.pdf
SPENNA - FRAMBOÐ	2 V ~ 5.5 V
BIRGIR TÆKI PAKKI	fSV
RÖÐ	TC7SH
PÖKKUN	Cut Tape (CT)
PAKKI / TILFELLI	SOT-953
ÖNNUR NÖFN	TC7SH32FSL3FCT
VINNUHITASTIG	-40°C ~ 85°C
FJÖLDI INNTAKA	2
FJÖLDI HRINGRÁSA	1
UPPSETNINGARTEGUND	Surface Mount
VÖKTUNARNÆMISSTIG (MSL)	1 (Unlimited)
HÁMARKSFJÖLGUNARTÍMA @ V, MAX CL	7.5ns @ 5V, 50pF
LOGIC TYPE	OR Gate
LOGIC LEVEL - LOW	0.5V
LOGIC LEVEL - HIGH	1.5V
LEIDA FRJÁLS STAÐA / ROHS STAÐA	Lead free / RoHS Compliant
LÖGUN	-
NÁKVÆM LÝSING	OR Gate IC 1 Channel fSV
NÚVERANDI - QUIESCENT (MAX)	2µA
NÚVERANDI - OUTPUT HIGH, LOW	8mA, 8mA

### Svipaðir merkingar

Toshiba Semiconductor and Storage TC7SH32FS,L3F	TC7SH32FS,L3F dreifingaraðili	TC7SH32FS,L3F birgir
TC7SH32FS,L3F verð	TC7SH32FS,L3F Myndir	TC7SH32FS,L3F mynd
TC7SH32FS,L3F PDF gagnablað	TC7SH32FS,L3F niðurhal gagnablað	TC7SH32FS,L3F gagnablað
TC7SH32FS,L3F lager	Kauptu TC7SH32FS,L3F	Kauptu Toshiba Semiconductor and Storage TC7SH32FS,L3F
Toshiba Semiconductor and Storage TC7SH32FS,L3F	Toshiba Semiconductor and Storage birgir	Toshiba Semiconductor and Storage dreifingaraðili
Toshiba Semiconductor and Storage TC7SH32FS,L3F	Toshiba TC7SH32FS,L3F	

### skyldar vörur

 <p><b>TC7SH14FU,LJ(CT)</b> Framleiðendur: Toshiba Semiconductor and Storage Lýsing: IC INVERTER SCHMITT 1CH USV Á lager: Out stock <b>RFQ</b></p>	 <p><b>TC7SH34F,LJ(CT)</b> Framleiðendur: Toshiba Semiconductor and Storage Lýsing: IC BUFFER NON-INVERT 5.5V SMV Á lager: Out stock <b>RFQ</b></p>
 <p><b>TC7SH34FU,LJ(CT)</b> Framleiðendur: Toshiba Semiconductor and Storage Lýsing: IC BUFFER NON-INVERT 5.5V USV Á lager: Out stock <b>RFQ</b></p>	 <p><b>TC7SH17FU,LJ(CT)</b> Framleiðendur: Toshiba Semiconductor and Storage Lýsing: IC BUFFER NON-INVERT 5.5V USV Á lager: Out stock <b>RFQ</b></p>
 <p><b>TC7SH34FS(TPL3)</b> Framleiðendur: Toshiba Semiconductor and Storage Lýsing: IC BUFFER NON-INVERT 5.5V FSV Á lager: Out stock <b>RFQ</b></p>	 <p><b>TC7SH34FE,LM</b> Framleiðendur: Toshiba Semiconductor and Storage Lýsing: IC BUFFER NON-INVERT 5.5V ESV Á lager: Out stock <b>RFQ</b></p>
 <p><b>TC7SH34FU(T5L,F,T)</b> Framleiðendur: Toshiba Semiconductor and Storage Lýsing: IC BUFFER NON-INVERT 5.5V USV Á lager: Out stock <b>RFQ</b></p>	 <p><b>TC7SH32FE,LM</b> Framleiðendur: Toshiba Semiconductor and Storage Lýsing: IC GATE OR 1CH 2-INP ESV Á lager: Out stock <b>RFQ</b></p>
 <p><b>TC7SH32FU,LJ(CT)</b> Framleiðendur: Toshiba Semiconductor and Storage Lýsing: IC GATE OR 1CH 2-INP USV Á lager: Out stock <b>RFQ</b></p>	 <p><b>TC7SH17F,LJ(CT)</b> Framleiðendur: Toshiba Semiconductor and Storage Lýsing: IC BUFFER NON-INVERT 5.5V SMV Á lager: Out stock <b>RFQ</b></p>
 <p><b>TC7SH17F,LJ</b> Framleiðendur: Toshiba Semiconductor and Storage Lýsing: IC BUFFER NON-INVERT 5.5V SMV Á lager: Out stock <b>RFQ</b></p>	 <p><b>TC7SH32F,LJ(CT)</b> Framleiðendur: Toshiba Semiconductor and Storage Lýsing: IC GATE OR 1CH 2-INP SMV Á lager: Out stock <b>RFQ</b></p>