

## **Sup/IRBuck™**

### **USER GUIDE FOR IR3837 EVALUATION BOARD**

#### **DESCRIPTION**

The IR3837 *SupIRBuck™* is an easy-to-use, fully integrated and highly efficient DC/DC regulator. The onboard PWM controller and MOSFETs make IR3837 a space-efficient solution, providing accurate power delivery for low output voltage applications.

IR3837 is a versatile regulator which offers programmability of switching frequency and current limit while operates in wide input and output voltage range.

The switching frequency is programmable from 250kHz to 1.5MHz for an optimum solution.

Key features includes: Internal LDO, Pre-Bias startup, protection functions, such as hiccup current limit and thermal shutdown to give required system level security in the event of fault conditions. An output over-current protection function is implemented by sensing the voltage developed across the on-resistance of the synchronous rectifier MOSFET for optimum cost and performance.

This user guide contains the schematic and bill of materials for the IR3837 evaluation board. The guide describes operation and use of the evaluation board itself. Detailed application information for IR3837 is available in the IR3837 data sheet.

---

#### **BOARD FEATURES**

- $V_{in} = +12V$
- $V_{out} = +1.8V @ 0 - 14A$
- $F_s = 600kHz$
- $L = 0.51\mu H$
- $C_{in} = 4 \times 10\mu F$  (ceramic 1206) +  $1 \times 330\mu F$  (electrolytic)
- $C_{out} = 7 \times 47\mu F$  (ceramic 0805)

## CONNECTIONS and OPERATING INSTRUCTIONS

A well regulated +12V input supply should be connected to VIN+ and VIN-. A maximum 14A load should be connected to VOUT+ and VOUT-. The connection diagram is shown in Fig. 1 and inputs and outputs of the board are listed in Table I.

IR3837 has only one input supply, the input voltage ( $V_{in}$ ). Internal LDO circuitry generates  $V_{cc}$  voltage ( $=5.2V$ ).

One option for using a separate +5V supply for  $V_{cc}$  voltage, as required in a certain application, is to remove R15 (zero Ohm resistor), which disables the internal LDO circuit. In this case  $V_{cc}$  input should be a well regulated 4.5V-7.5V supply and it would be connected to  $V_{cc+}$  and  $V_{cc-}$ .

**Table I. Connections**

| Connection | Signal Name                |
|------------|----------------------------|
| VIN+       | $V_{in}$ (+12V)            |
| VIN-       | Ground of $V_{in}$         |
| VOUT+      | $V_{out}$ (+1.8V)          |
| VOUT-      | Ground of $V_{out}$        |
| Vref       | Internal Reference-Voltage |
| SEQ        | Sequence input             |
| $V_{cc+}$  | VCC/LDO_out pin            |
| $V_{cc-}$  | Connected to PGND          |
| Sync       | Synchronous input          |

## LAYOUT

The PCB is a 4-layer board. All of layers are 2 Oz. copper. The IR3837 and other components are mounted on the top and bottom side of the board.

Power supply decoupling capacitors, the Bootstrap capacitor and feedback components are located close to IR3837. The feedback resistors are connected to the output voltage at the point of regulation and are located close to IR3837. To improve efficiency, the circuit board is designed to minimize the length of the on-board power ground current path.

Connection Diagram

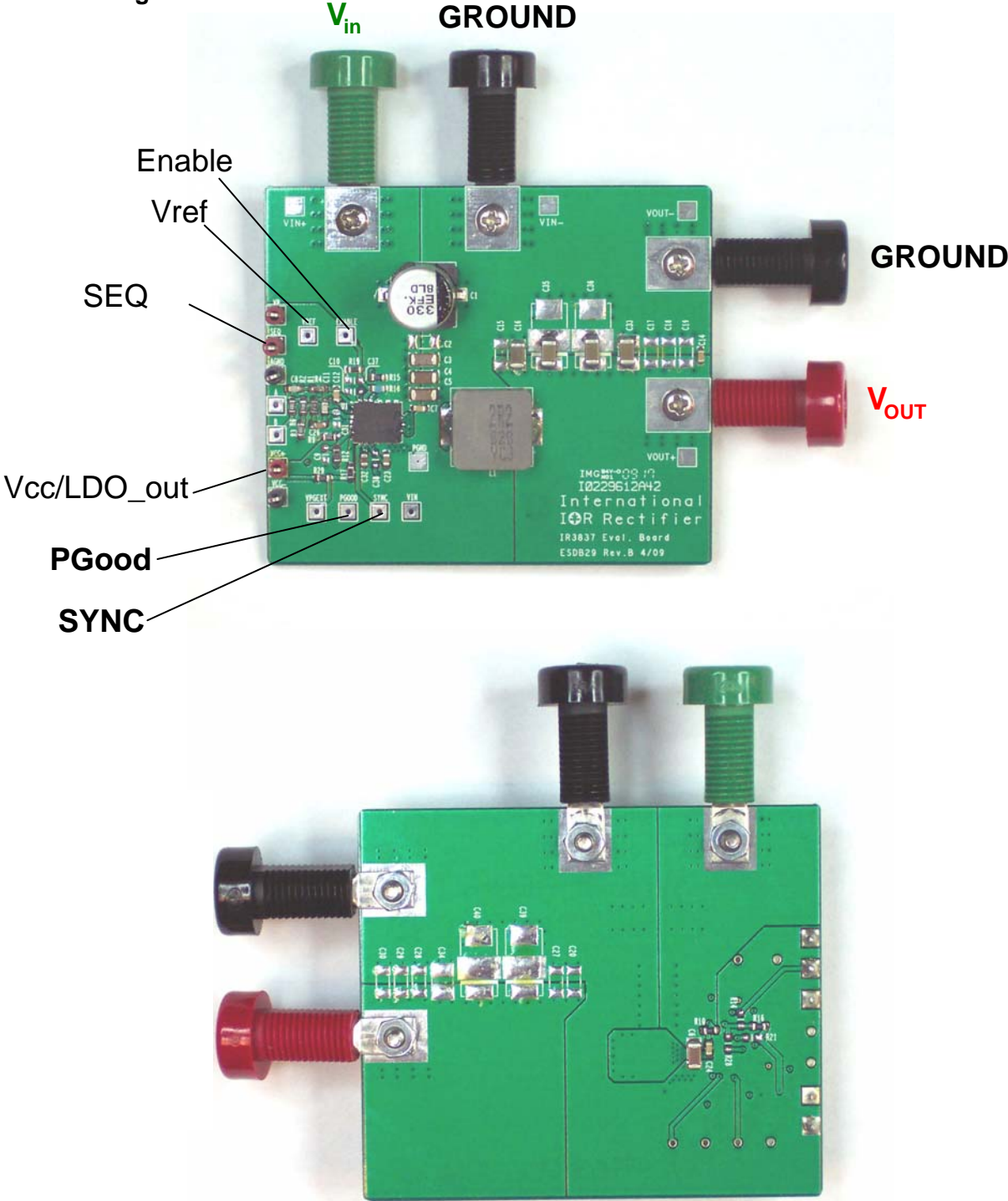
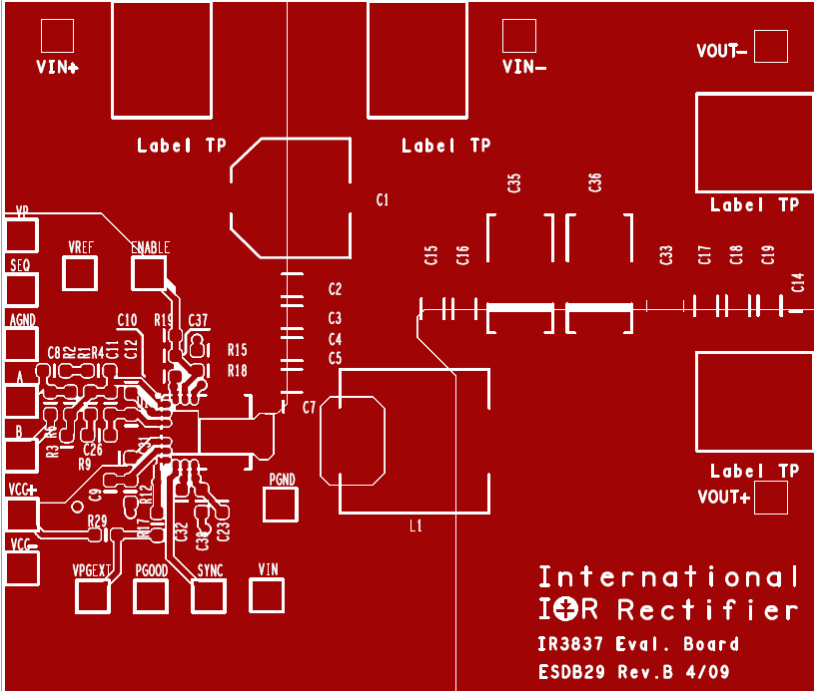
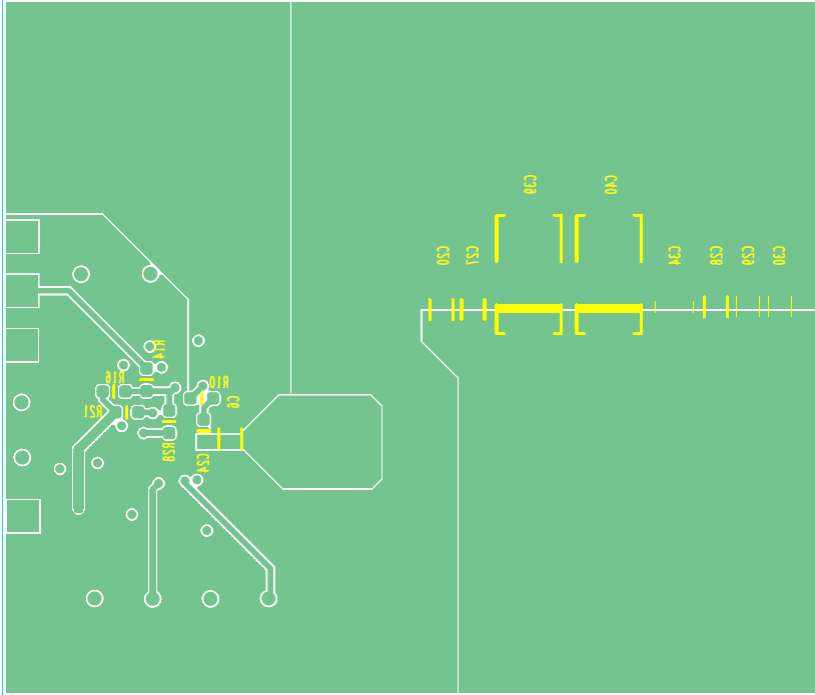


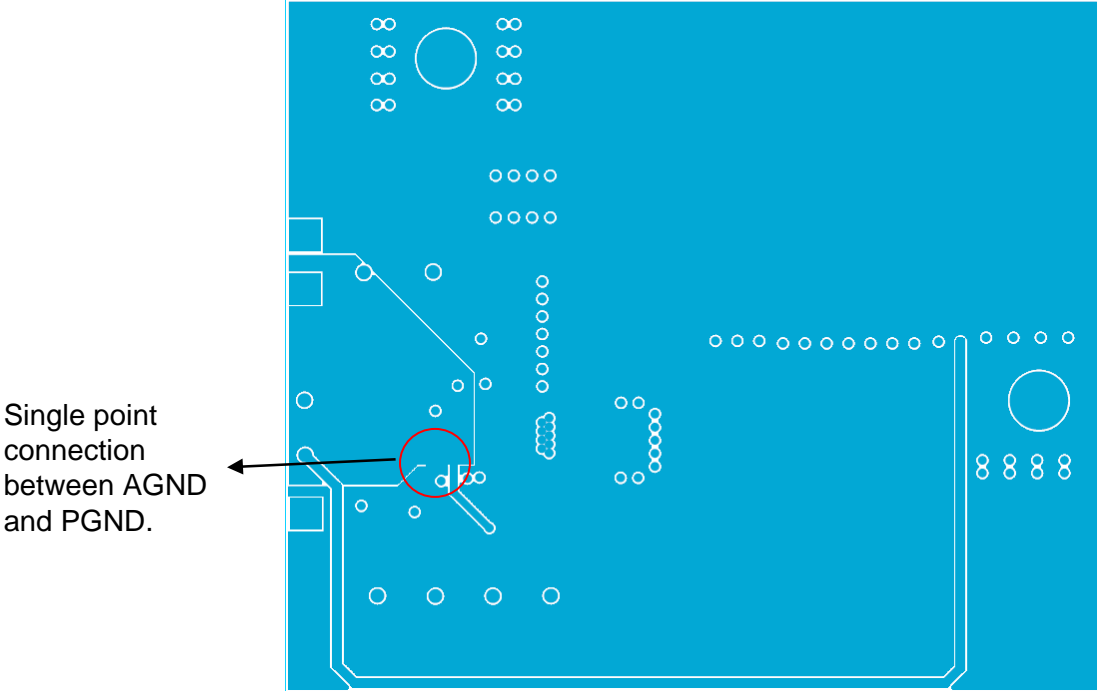
Fig. 1: Connection diagram of IR3838 evaluation board (top and bottom)



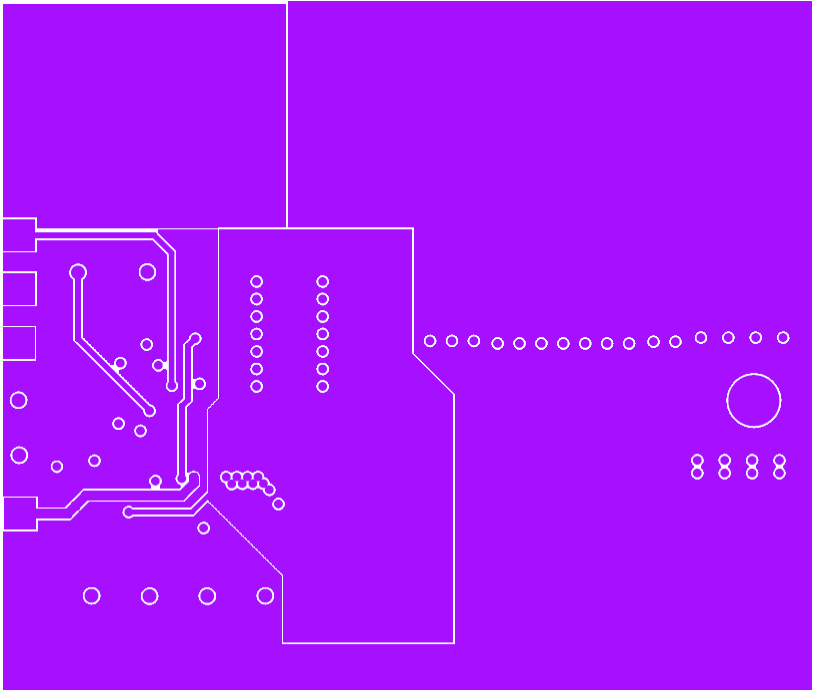
**Fig. 2: Board layout, top layer**



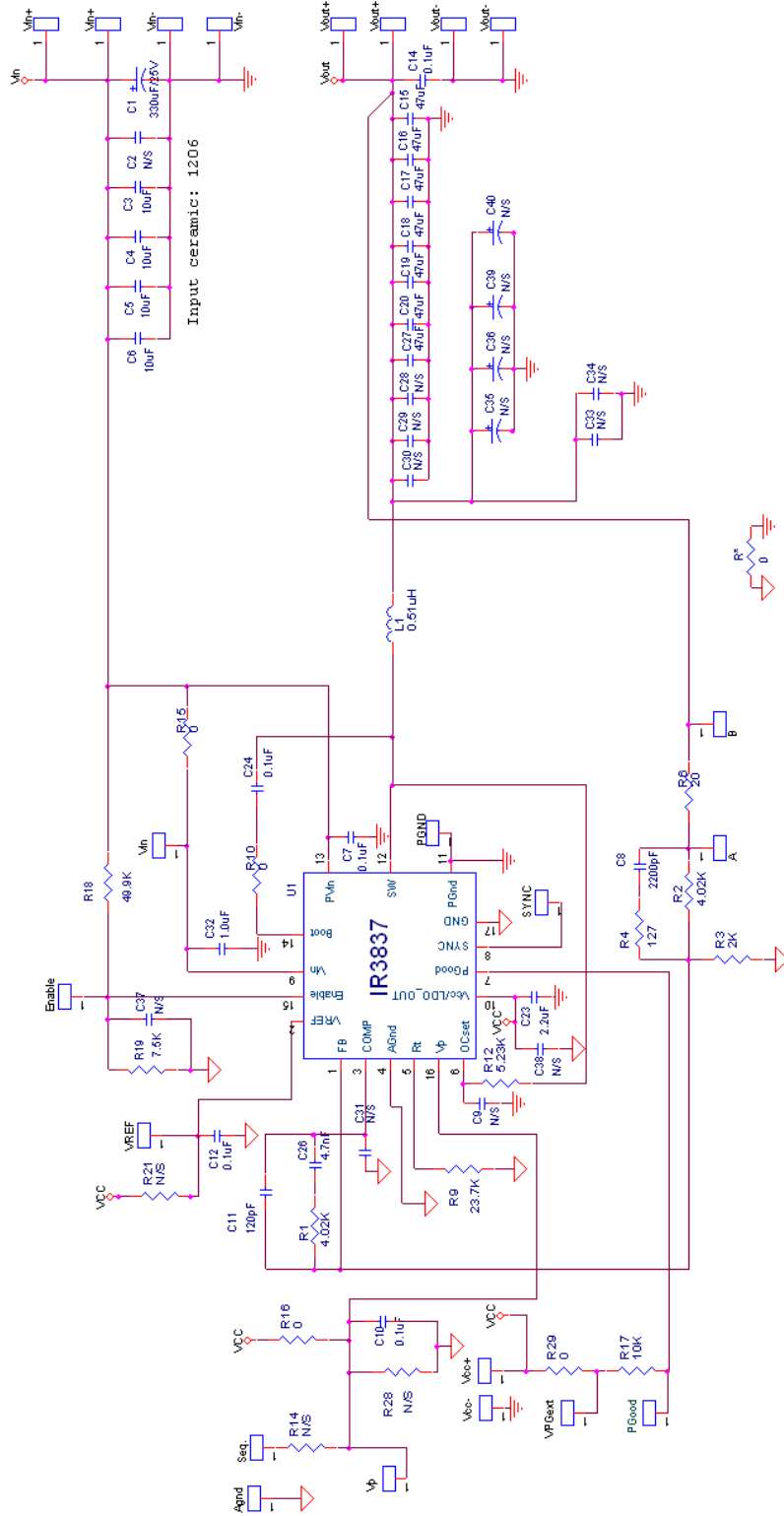
**Fig. 3: Board layout, bottom layer**



**Fig. 4: Board layout, mid-layer I**



**Fig. 5: Board layout, mid-layer II**



**Fig.8: Schematic of the IR3837 evaluation board**

**Bill of Materials**

| Item | Nun | Quantity | Part Reference  | Value     | Description                         | Manufacturer       | Manufacturer Part Number |
|------|-----|----------|---|-----------|-------------------------------------|--------------------|--------------------------|
| 1    |     | 1        | C1  | 330uF/25V | SMD Electrolytic, Fsize, 25V, 20%   | Panasonic          | EEE-FK1E331P             |
| 2    |     | 4        | C3 C4 C5 C6   | 10uF      | Ceramic,16V,1206,X7R,20%            | Panasonic - ECG    | ECJ-3YX1C106K            |
| 3    |     | 5        | C7 C10 C12 C14 C24  | 0.1uF     | 0603-50V-X7R-10%                    | Panasonic          | ECJ-1VB1H104K            |
| 4    |     | 1        | C8  | 2200pF    | Ceramic,50V,0603,C0G,5%             | TDK Corporation    | C1608C0G1H222J           |
| 5    |     | 1        | C11   | 120pF     | Ceramic,50V,0603,NP0                | Kemet              | C0603C121J5GACTU         |
| 6    |     | 1        | C23   | 2.2uF     | Ceramic, 16V, 0603, X5R, 20%        | AVX Corporation    | 0603YD225MAT2A           |
| 7    |     | 1        | C26   | 4.7nF     | Ceramic,25V,0603,C0G,5%             | TDK Corporation    | C1608C0G1E472J           |
| 8    |     | 1        | C32   | 1.0uF     | Ceramic,25V,0603,X5R,10%            | Murata Electronics | GRM188R61E105KA12D       |
| 9    |     | 7        | C15 C16 C17 C18 C33<br>C35 C36                              | 47uF      | CAP, Ceramic, 6.3V X5R 0805         | Taiyo Yuden        | JMK212BJ476MG-T          |
| 10   |     | 14       | C2 C9 C19 C20 C27 C28<br>C29 C30 C31 C34 C37<br>C38 C39 C40 | N/S       | No Stuff                            |                    |                          |
| 11   |     | 1        | L1  | 0.51uH    | SMT-Inductor,0.29mOhms,11x7.2x7.5mm | VITEC              | 59PR9876N                |
| 12   |     | 4        | R10 R15 R16 R29   | 0         | Thick-film,0603,1/10W,5%            | Vishay/Dale        | CRCW06030000Z0EA         |
| 13   |     | 2        | R1 R2   | 4.02K     | Thick-film,0603,1/10W,1%            | Rohm               | MCR03EZPFX4021           |
| 14   |     | 1        | R3  | 2K        | Thick-film,0603,1/10W,1%            | Rohm               | MCR03EZPFX2001           |
| 15   |     | 1        | R4  | 127       | Thick-film,0603,1/10 W,1%           | Rohm               | MCR03EZPFX1270           |
| 16   |     | 1        | R6  | 20        | Thick-film,0603,1/10 W,5%           | Vishay/Dale        | CRCW060320R0FKEA         |
| 17   |     | 1        | R9  | 23.7K     | Thick-film,0603,1/10W,1%            | Rohm               | MCR03EZPFX2372           |
| 18   |     | 1        | R12   | 5.23K     | Thick-film,0603,1/10 W,1%           | Rohm               | MCR03EZPFX5231           |
| 19   |     | 1        | R17   | 10K       | Thick-film,0603,1/10W,1%            | Rohm               | MCR03EZPFX1002           |
| 20   |     | 1        | R18   | 49.9K     | Thick-film,0603,1/10 W,1%           | Rohm               | MCR03EZPFX4992           |
| 21   |     | 1        | R19   | 7.5K      | Thick-film,0603,1/10 W,1%           | Rohm               | MCR03EZPFX7501           |
| 22   |     | 3        | R14 R21 R28   | N/S       | No Stuff                            |                    |                          |
| 23   |     | 1        | U1  | IR3837    | IR3837 PQFN                         | IR                 | IR3837MBF                |

## TYPICAL OPERATING WAVEFORMS

$V_{in}=12V$ ,  $V_{cc}/LDO=5.2V$ ,  $V_o=1.8V$ ,  $I_o=0-14A$ , Room Temperature, No Air Flow

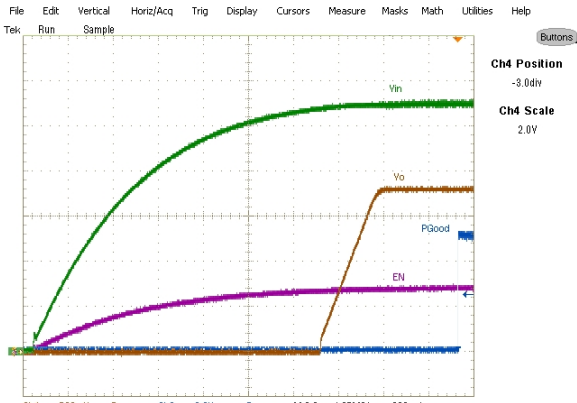


Fig. 9: Start up at 14A Load (Note 1)  
Ch<sub>1</sub>:V<sub>out</sub> Ch<sub>2</sub>:PGood Ch<sub>3</sub>:EN Ch<sub>4</sub>: V<sub>in</sub>

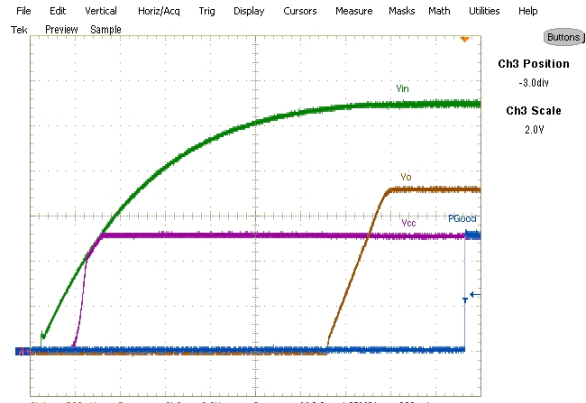


Fig. 10: Start up at 14A Load (Note 1)  
Ch<sub>1</sub>:V<sub>out</sub> Ch<sub>2</sub>:PGood Ch<sub>3</sub>:V<sub>cc</sub> Ch<sub>4</sub>: V<sub>in</sub>

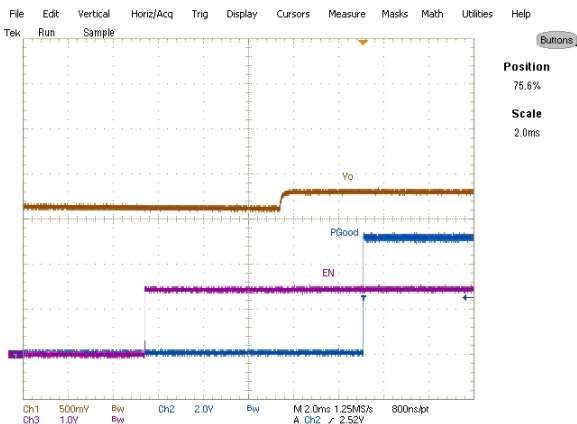


Fig. 11: Start up with 1.62V Prebias,  
0A Load, Ch<sub>1</sub>:V<sub>out</sub> Ch<sub>2</sub>: PGood Ch<sub>3</sub>: EN

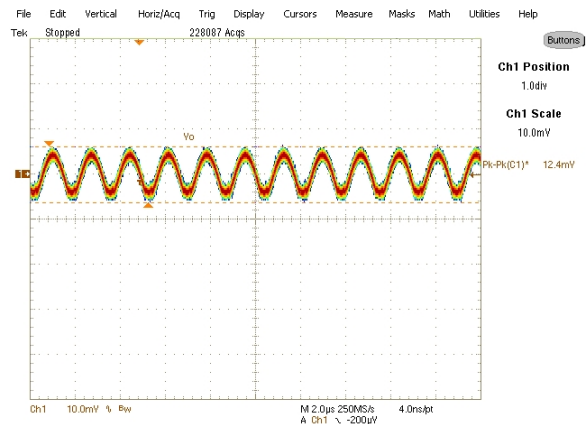


Fig. 12: Output Voltage Ripple, 14A load  
(Note2) Ch<sub>1</sub>: V<sub>out</sub>

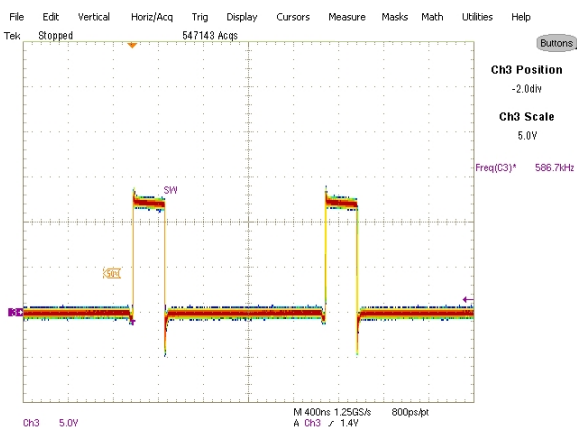


Fig. 13: Inductor node at 14A load  
Ch<sub>3</sub>:SW

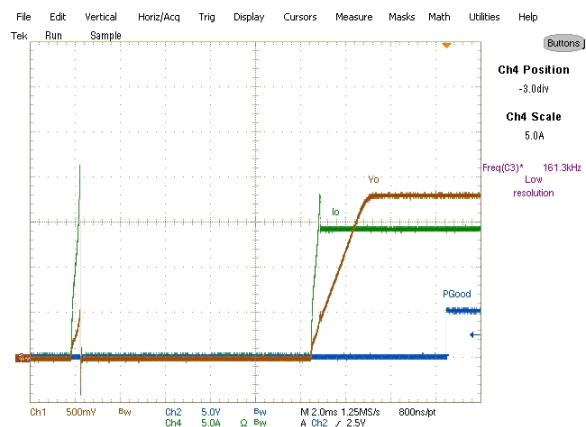
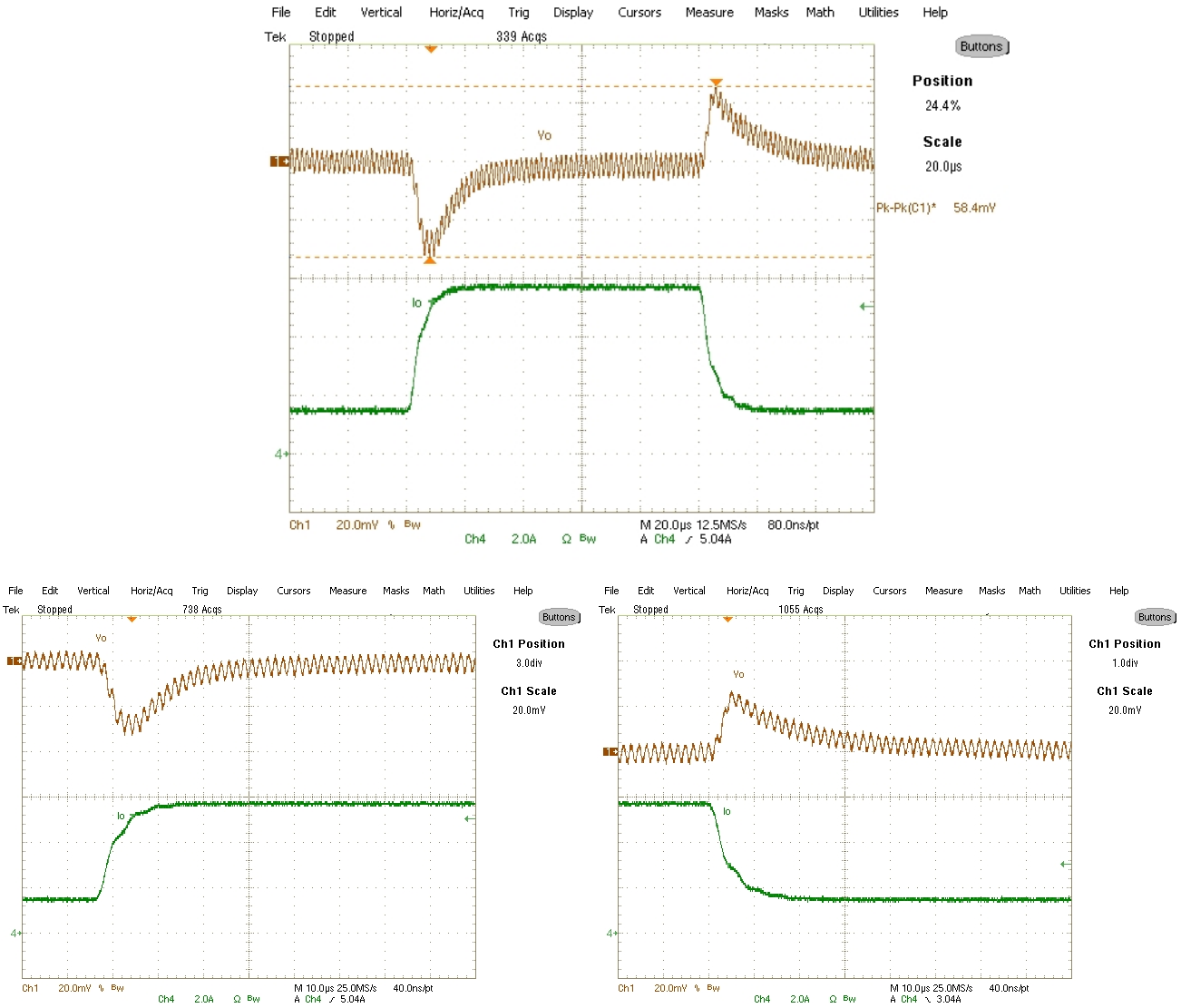


Fig. 14: Short (Hiccup) Recovery  
Ch<sub>1</sub>:V<sub>out</sub>, Ch<sub>2</sub>:PGood, Ch<sub>4</sub>:I<sub>out</sub>



**TYPICAL OPERATING WAVEFORMS**

**Vin=12V, Vcc/LDO=5.2V, Vo=1.8V, Room Temperature, No Air Flow**



**Fig. 15: Transient Response**  
1.4A(10%)-5.6A(40%) load (0.5A/us) Ch<sub>1</sub>:V<sub>out</sub>, Ch<sub>4</sub>:I<sub>o</sub>

Note1: Enable is tied to Vin via a resistor divider and triggered when Vin is exceeding above 10.2V.  
Note2: Vo ripple signal is taken across C17 cap.

**TYPICAL OPERATING WAVEFORMS**

Vin=12V, Vcc/LDO=5.2V, Vo=1.8V, Io=0-14A, Room Temperature, No Air Flow

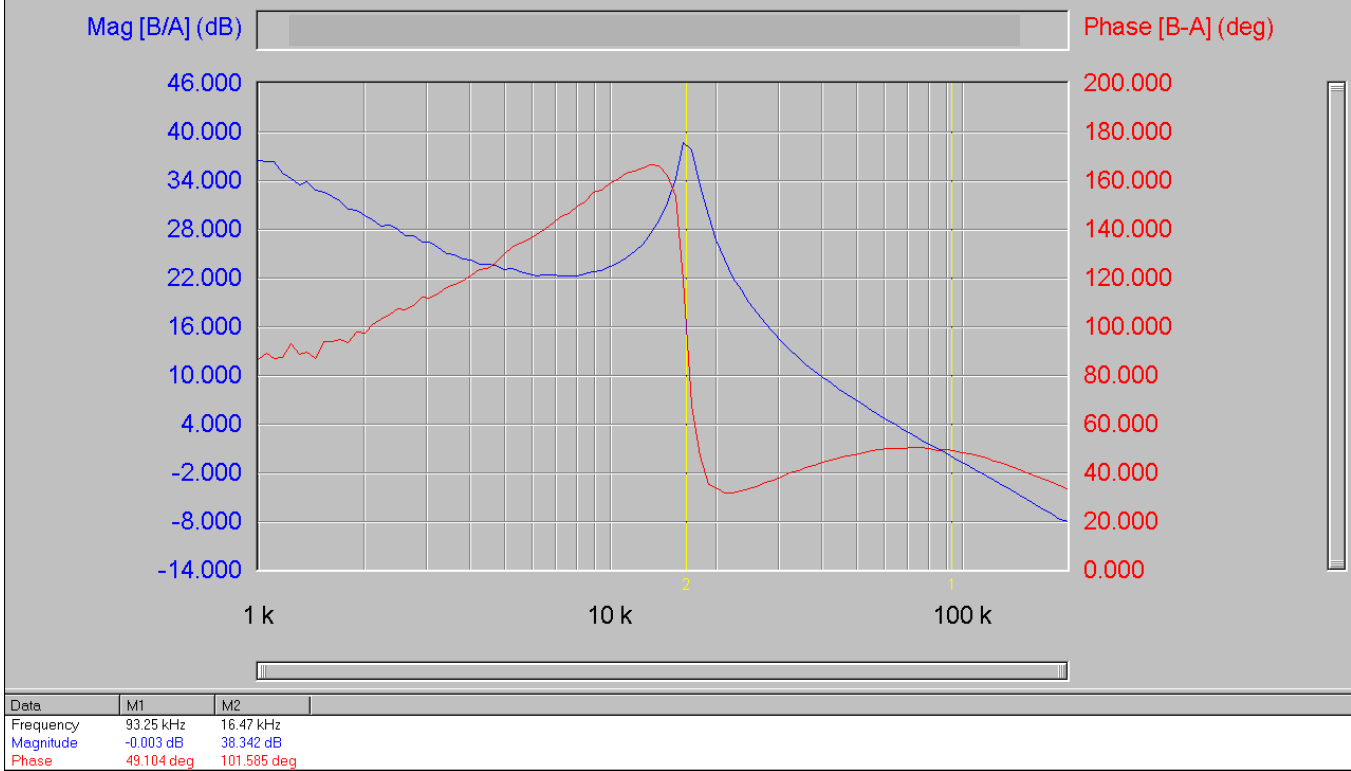


Fig.16: Bode Plot at 10A load shows a bandwidth of 93kHz and phase margin of 49 degrees

**TYPICAL OPERATING WAVEFORMS**

Vin=12V, Vcc/LDO=5.2V, Vo=1.8V, Io=0-14A, Room Temperature, No Air Flow

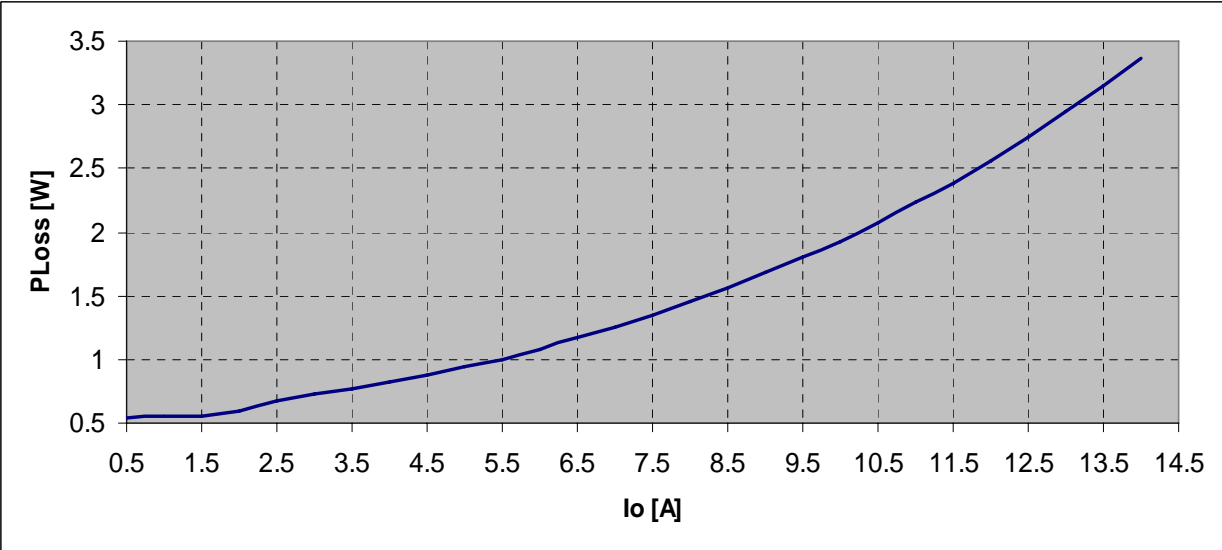
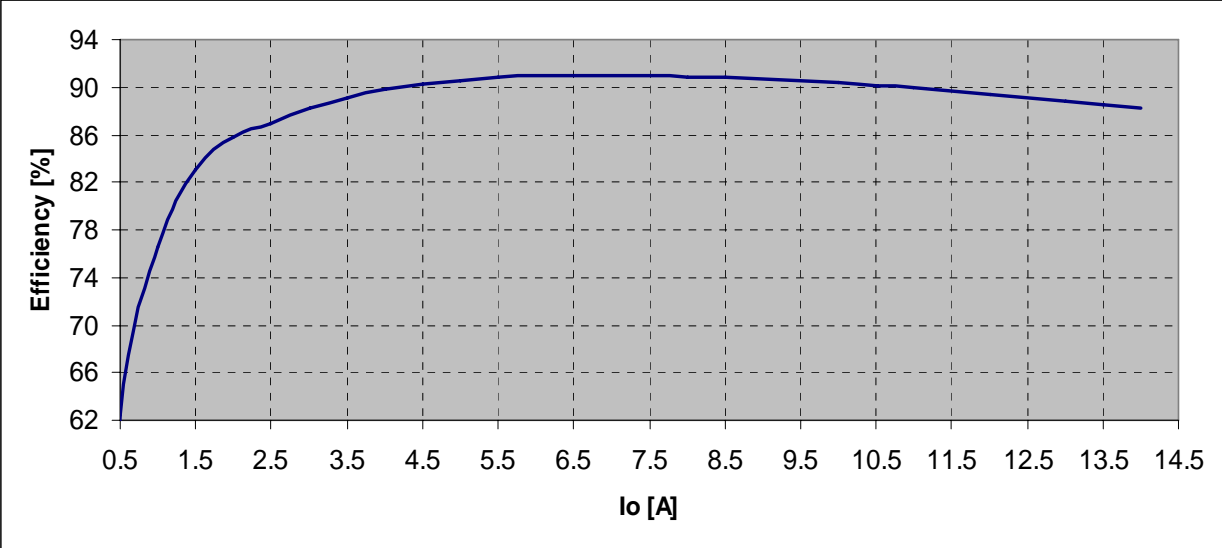


Fig.17: Efficiency and power loss vs. load current

THERMAL IMAGES

Vin=12V, Vcc/LDO=5.2V, Vo=1.8V, Io=14A, Room Temperature, No Air Flow

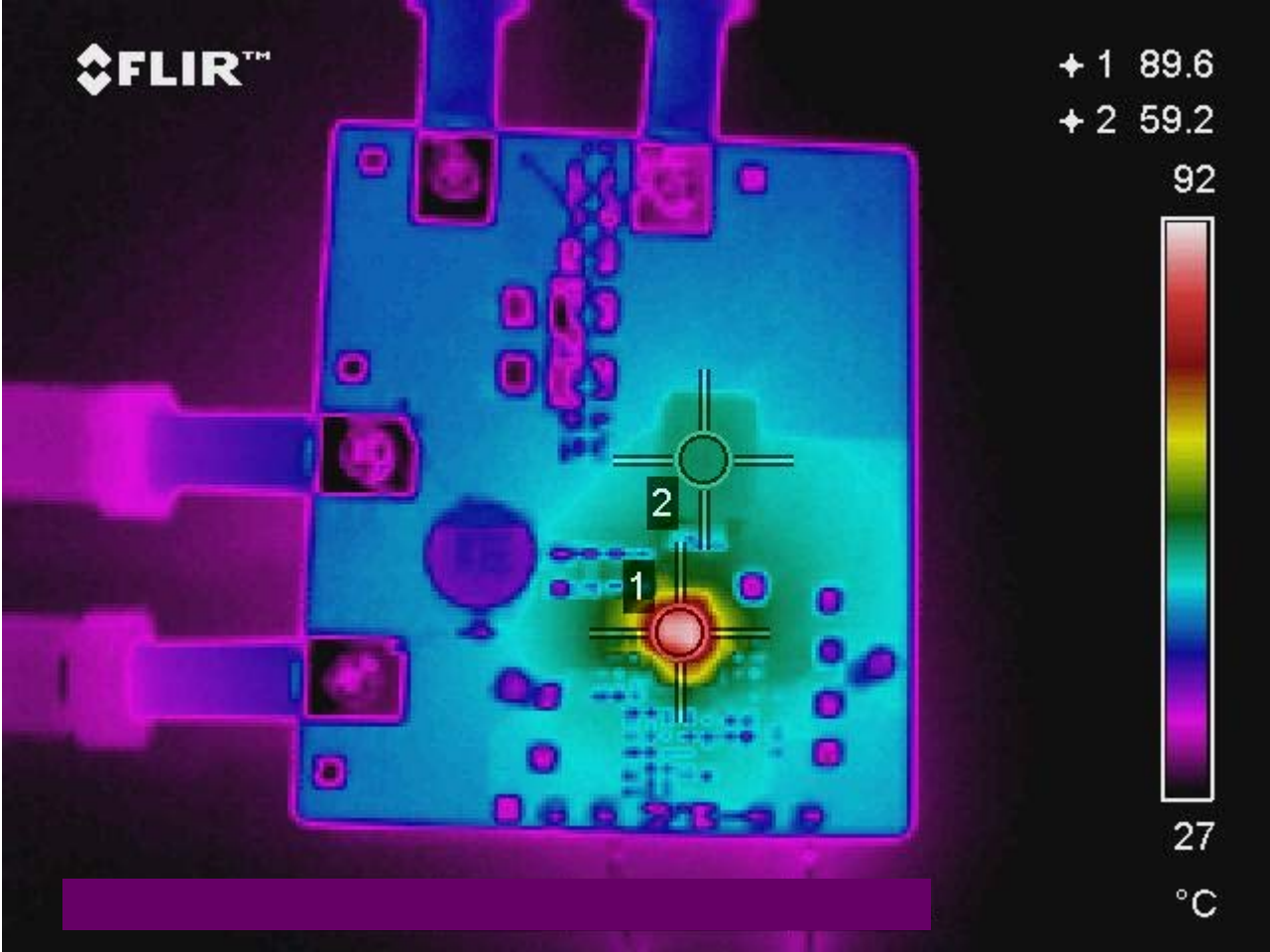


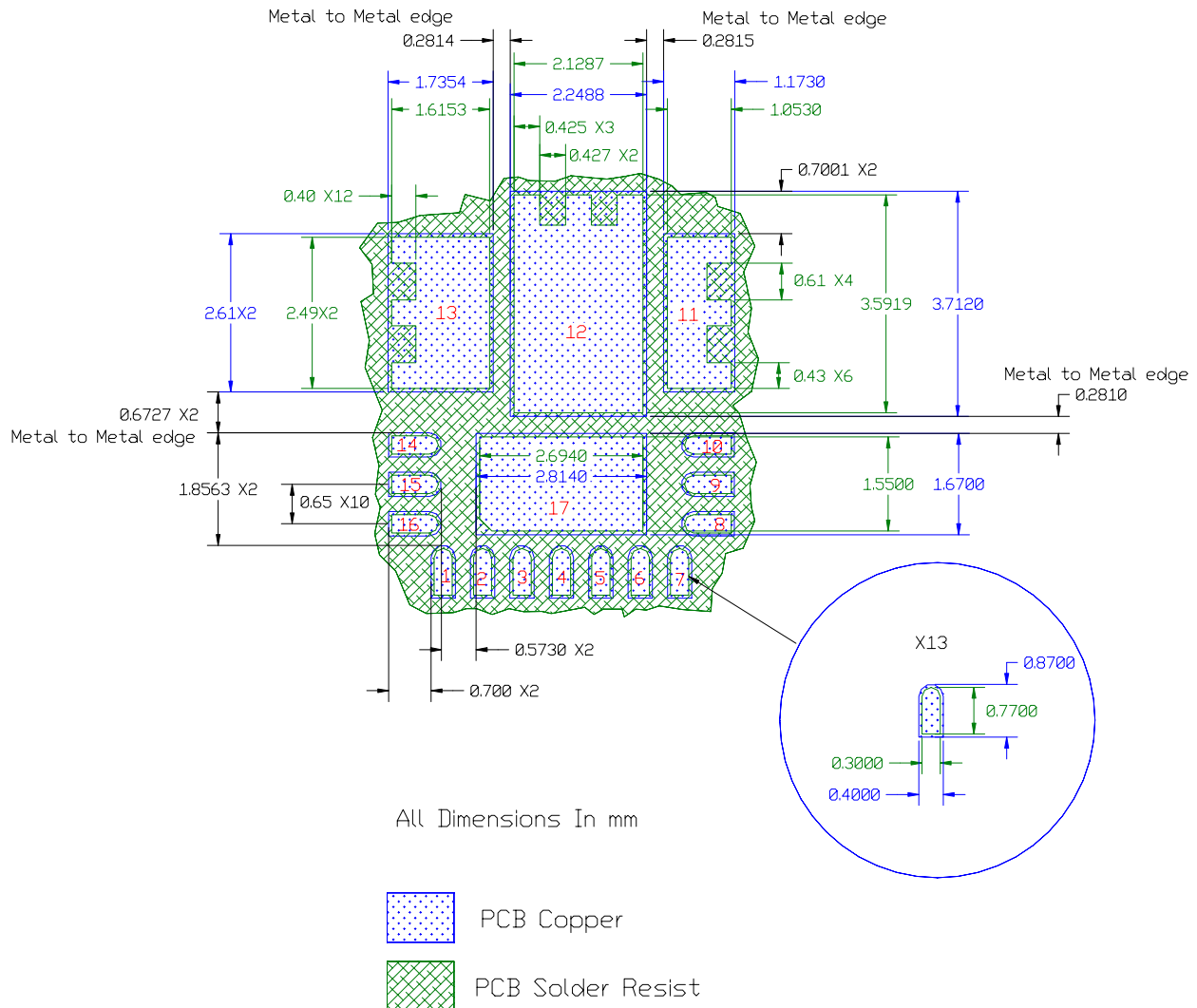
Fig.18: Thermal Image at 14A load  
Test Point 1: IR3837, Test Point 2: Inductor

**PCB Metal and Components Placement**

The lead lands (the 13 IC pins) width should be equal to the nominal part lead width. The minimum lead to lead spacing should be  $\geq 0.2\text{mm}$  to minimize shorting.

Lead land length should be equal to the maximum part lead length + 0.3 mm outboard extension. The outboard extension ensures a large and inspectable toe fillet.

The pad lands (the 4 big pads other than the 13 IC pins) length and width should be equal to maximum part pad length and width. However, the minimum metal to metal spacing should be no less than 0.17mm for 2 oz. Copper; no less than 0.1mm for 1 oz. Copper and no less than 0.23mm for 3 oz. Copper.

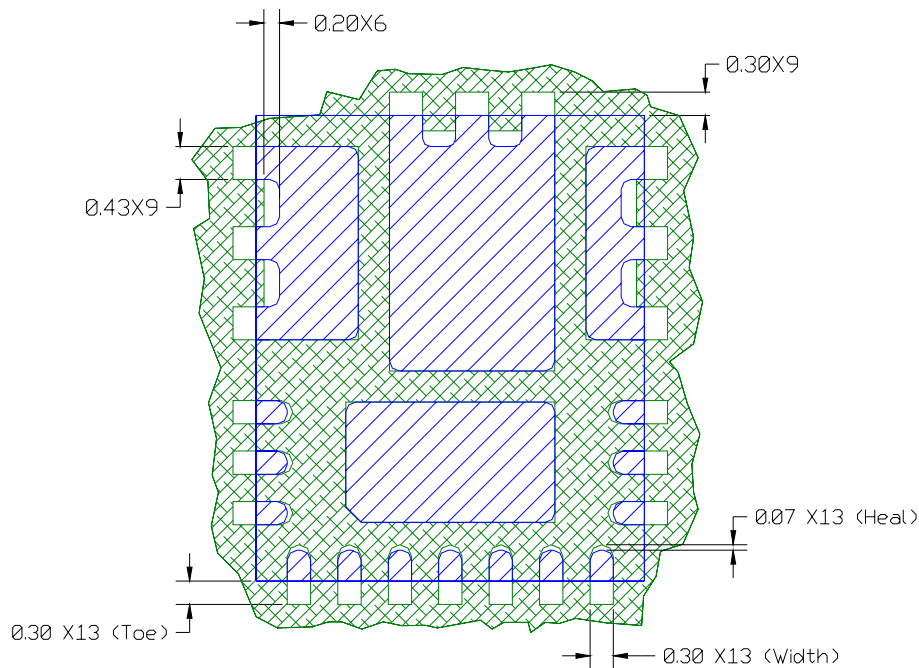


## Solder Resist

It is recommended that the lead lands are Non Solder Mask Defined (NSMD). The solder resist should be pulled away from the metal lead lands by a minimum of 0.025mm to ensure NSMD pads.

The land pad should be Solder Mask Defined (SMD), with a minimum overlap of the solder resist onto the copper of 0.05mm to accommodate solder resist mis-alignment.

Ensure that the solder resist in between the lead lands and the pad land is  $\geq 0.15\text{mm}$  due to the high aspect ratio of the solder resist strip separating the lead lands from the pad land.



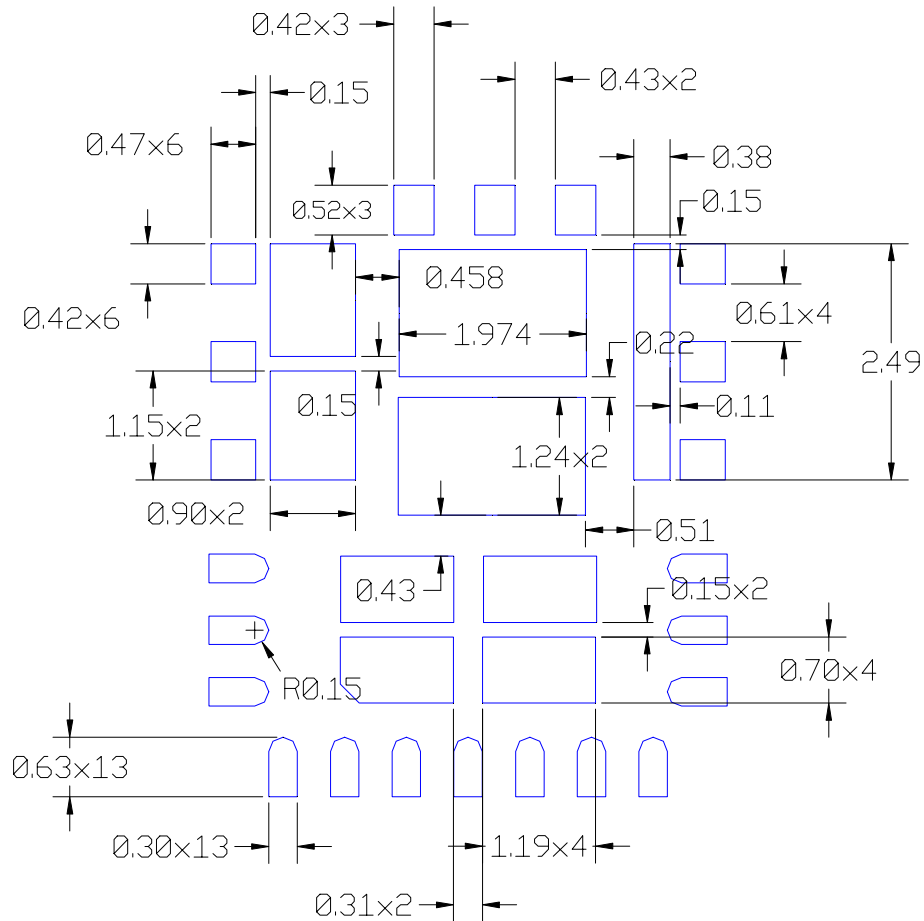
All Dimensions In mm

All Pads are Solder Mask Defined



**Stencil Design**

- The Stencil apertures for the lead lands should be approximately 80% of the area of the lead lads. Reducing the amount of solder deposited will minimize the occurrences of lead shorts. If too much solder is deposited on the center pad the part will float and the lead lands will be open.
- The maximum length and width of the land pad stencil aperture should be equal to the solder resist opening minus an annular 0.2mm pull back to decrease the incidence of shorting the center land to the lead lands when the part is pushed into the solder paste.



Stencil Aperture  
 All Dimensions in mm

| DIM | MILIMITERS  |       | INCHES       |        | DIM        | MILIMITERS  |       | INCHES       |        |
|-----|-------------|-------|--------------|--------|------------|-------------|-------|--------------|--------|
|     | MIN         | MAX   | MIN          | MAX    |            | MIN         | MAX   | MIN          | MAX    |
| A   | 0.800       | 1.000 | 0.0315       | 0.0394 | L          | 0.350       | 0.450 | 0.0138       | 0.0177 |
| A1  | 0.000       | 0.050 | 0.0000       | 0.0020 | M          | 2.441       | 2.541 | 0.0961       | 0.1000 |
| b   | 0.375       | 0.475 | 0.1477       | 0.1871 | N          | 0.703       | 0.803 | 0.0277       | 0.0316 |
| b1  | 0.250       | 0.350 | 0.0098       | 0.1379 | O          | 2.079       | 2.179 | 0.0819       | 0.0858 |
| c   | 0.203 REF.  |       | 0.008 REF.   |        | P          | 3.242       | 3.342 | 0.1276       | 0.1316 |
| D   | 5.000 BASIC |       | 1.969 BASIC  |        | Q          | 1.265       | 1.365 | 0.0498       | 0.0537 |
| E   | 6.000 BASIC |       | 2.362 BASIC  |        | R          | 2.644       | 2.744 | 0.1041       | 0.1080 |
| e   | 1.033 BASIC |       | 0.0407 BASIC |        | S          | 1.500       | 1.600 | 0.0591       | 0.0630 |
| e1  | 0.650 BASIC |       | 0.0256 BASIC |        | t1, t2, t3 | 0.401 BASIC |       | 0.016 BACIS  |        |
| e2  | 0.852 BASIC |       | 0.0335 BASIC |        | t4         | 1.153 BASIC |       | 0.045 BASIC  |        |
|     |             |       |              |        | t5         | 0.727 BASIC |       | 0.0286 BASIC |        |

